

WHO WE ARE

A LEADER IN THE SURGICAL SPINE INDUSTRY,
GS Medical is a supplier of spinal implants and instrumentation, and provider of high-quality surgical solutions. Our mission is simple: improve the treatment and quality of life for patients with debilitating back and neck pain by creating state-of-the-art, intuitive spine products.

Our focus is to create value-enhanced, multi-faceted surgical solutions for providers to promote outstanding patient care. The needs of our surgeon partners are at the forefront of our research and development, which drive us to engineer cutting edge implants and instrumentation that continue to revolutionize the spine industry.

For more than 20 years GS Medical has marked major milestones by developing new patented technologies, receiving CE and FDA approvals, increasing our manufacturing capabilities and expanding our global presence.

Through effective development, refined engineering and process, GS Medical has successfully launched many new platforms that focus on reproducible results and procedural cost reduction. Our products have been used in thousands of spine surgeries throughout the United States, and hundreds of thousands globally. We are located in Irvine, California with international offices and manufacturing sites in South Korea.



GS Medical

EXPANDING NEW HORIZONS



AGF ENTERPRISE
Real Solutions For Real People With Real Problems

CONNECT WITH US

Corporate USA Office
GS Medical
6 Wrigley, Irvine, CA 92618



Contact Anthony Fairley
877-216-1186 Office
877-349-6085 Fax
anthonygf@agfenterprsie.com Email
www.agfenterprise.com

**Innovators of Surgeon-Driven
Spinal Technology that
advances Patient Care**

GS MEDICAL COMPREHENSIVE PRODUCT PORTFOLIO

Lumbar Interbody Offerings



The **AnyPlus® ALIF Interbody** is designed to provide stabilization and restore disc height via an anterior or anterolateral approach. The implant is available in various lordotic sizes.



The **AnyPlus® PLIF Interbody**, available in various lordotic sizes, utilizes a posterior approach for interbody fusion in the lumbar spine (L2 to S1) to provide vertebral stability. The uniform 11mm width provides optimal contact with the vertebral endplates minimizing potential implant subsidence.



The **AnyPlus® TPLIF Interbody** is a bullet-nosed implant that allows for ease of insertion through a bilateral, unilateral or transforaminal approach. Various lordotic sizes available.



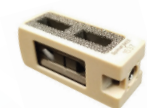
The **AnyPlus® TLIF Interbody** allows for a bilateral, unilateral or transforaminal approach. The design and tooth pattern provide stability and reduce the risk of implant migration.



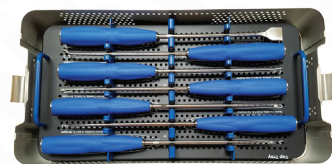
The **AnyPlus® DLIF Interbody and Retractor System** is designed with a tapered leading edge for easy insertion to provide optimal intervertebral fit and ample graft cavity to promote bony ingrowth. Specifically designed to complement the implant, the GS Retractor allows for tissue retraction and implant delivery in one.



The **Stand-Alone Lumbar Plate and Screw System** provides the surgeon with the option to deliver the interbody, plate and screws all as one. The implant provides a large graft fenestration, and the plate provides multi-angulation screw placement.



The **Expandable Interbody Implant** option allows the surgeon to deliver an implant that is able to fill the interbody cavity. Accompanying instrumentation parallels the implant offering.



GS Medical's state-of-the-art **Anterior and Posterior Disc Prep Sets** offer surgeon users the ability to prepare the disc space with simple, intuitive anterior and posterior instrumentation.

Lumbar Pedicle Screw Offerings



The **AnyPlus® 5.5 Pedicle Screw System**, available as a mono- and polyaxial screw head, accommodates patient anatomical variations to address a variety of diseases of the spine.



The **GSS™ 6.0 Pedicle Screw System**, available as a mono- and polyaxial screw head, is designed to provide stabilization to the thoracic, lumbar and sacral spine, and to treat a variety of diseases of the spine.



The **AnyPlus® Dual-Lead Screw System** is engineered with a dual-thread design and mono- and polyaxial screw options to yield faster insertion without loss of screw pullout strength.



The **AnyPlus® NX Percutaneous Pedicle Screw System** is a less invasive option for pedicle screw placement and is designed for use in multiple levels and spondylolisthesis reduction. A hallmark instrument of this system—our AnyPlus® NX Tower—is a multi-function instrument designed to deliver the pedicle screw and reduce the rod with a single device.

Deformity Solutions

GS Medical offers a wide variety of ancillary items, such as cobalt chrome rods, washers, hooks, rod connectors and crosslinks, that are engineered to complement our state-of-the-art implant systems.



Cervical Spine Offerings



The **Anterior Cervical Plate** is designed to provide internal fixation and enhance the rate of fusion, while allowing for better visibility and graft accommodation through the large graft windows. Our unique style blocking cam prevents inadvertent screw back out.



The **AnyPlus® ACIF Interbody** provides through an anterior approach reconstitution of the disc height at the operative level in the cervical spine. Its shape and graft fenestrations allow for profuse bony ingrowth. The interbody is designed to be used in tandem with our Cervical Plate.



The **Posterior Cervical OCT Plate and Screw System*** is engineered to facilitate strong and rapid fixation, as well as allow for osseointegration. The system includes a wide range of plate sizes, as well as rods, screws, offset connectors and hooks.



The **Stand-Alone Cervical Plate and Screw System** combines the benefits of an interbody spacer and cervical plate. With ample graft fenestration and easy screw placement, surgeon users can seamlessly place the implant.

Additional Product Offering



The **Kyphoplasty Device** allows the surgeon to restore the vertebral space to its original capacity following a compression fracture.

GS Medical supplies a variety of **Biologics** and unique Allograft options for our customers, including DBM and others.



* Pending FDA Approval
• Some products listed are provided through our valued partners.